



**TAKAPUNA NORTH
COMMUNITY TRUST**



With special thanks to the Devonport-Takapuna
Local Board for their continued support



CONTACT INFORMATION
09 486 2098

WWW.TAKAPUNATRUST.ORG.NZ

OFFICE@TAKAPUNATRUST.ORG.NZ



[Facebook/takapunanorthcommunitytrust](https://www.facebook.com/takapunanorthcommunitytrust)



LOCAL HISTORY WALKS GUIDE



**TAKAPUNA NORTH
COMMUNITY TRUST**

TAKAPUNA - MILFORD

Historical facts about the buildings in the area are highlighted during this walk and if taken during low tide you can view the fossil forest. You will need to download the trail information brochure as your guide for this walk.

You can find this on the Auckland Council Website:

<https://bit.ly/3GUASTD>

Location: Takapuna boat ramp on The Promenade.

Duration: 2hrs



KENNEDY PARK

Kennedy Park has a great childrens playground, with shade sails and loads of space for a fun family picnic or bring along your favorite sporting equipment. The Park facilities also include public toilets.

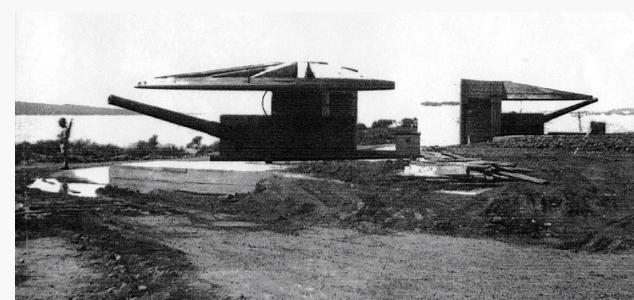
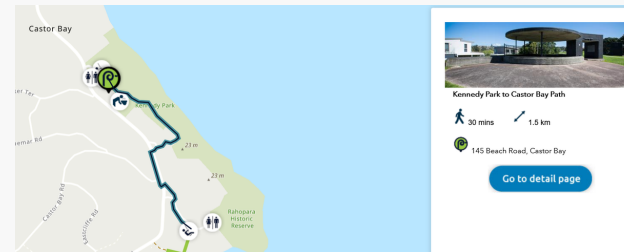
Kennedy Park is filled with Māori and military history. Onsite there is an ancient Māori pā site (Rahopara Pā) dating back hundreds of years along with historic WWII tunnels and gun emplacement areas.

Location: 145 Beach Road, Castor Bay.

For more information visit the Auckland Council website : <https://bit.ly/3rNgkbn>

Walk from Kennedy Park and Castor Bay Beach and stop at the lookout for some pretty impressive coastal views out to Rangitoto island and beyond. This walk does have some steep parts so just be mindful of this when taking the little ones. Not suitable in parts for prams.

The track exits onto Beach Road where you can walk to Castor Bay Beach. Great swimming at this beach is on offer and Castor Bay also has another playground for the kids to explore. **Distance:** 1.5km



NORTH HEAD

North Head is considered to be the most significant historical coastal defence site in the country. With an amazing walk with vast coastal view you can venture around complex tunnels, guns, searchlight emplacements and other fortifications. These date from the late 1800s up to the time of the Second World War.

For more information visit the Department of Conservation Website: <https://bit.ly/3sJu0DC>

Duration: 1 hour



FORT TAKAPUNA

Full of military history, Fort Takapuna is a must see for all the family. The Reserve has loads of space and amazing views over the Hauraki Gulf. The track is unformed and there are steep drop-offs in parts around the cliff tops. Fort Takapuna has two main buildings: the larger barracks built in the 1880s, and the smaller brick building beside it, built by the navy in the 1920s to store warheads for torpedoes and depth charges.

For more information visit the Department of Conservation Website: <https://bit.ly/3rRaeai>

Location: 170 Vauxhall Road, Narrow Neck, Auckland

Distance: 1km loop

